



RETURN TO CAMPUS

PROCEDURES & EXPECTATIONS

ONLINE LEARNING

Will continue K-
G12
for those who
need it.

- The pandemic may require us to return to online learning at any point.
- Health is our priority.
- Flexibility, open communication & positive mutual support are the keys to success.



Coming to School

BEFORE YOU LEAVE HOME

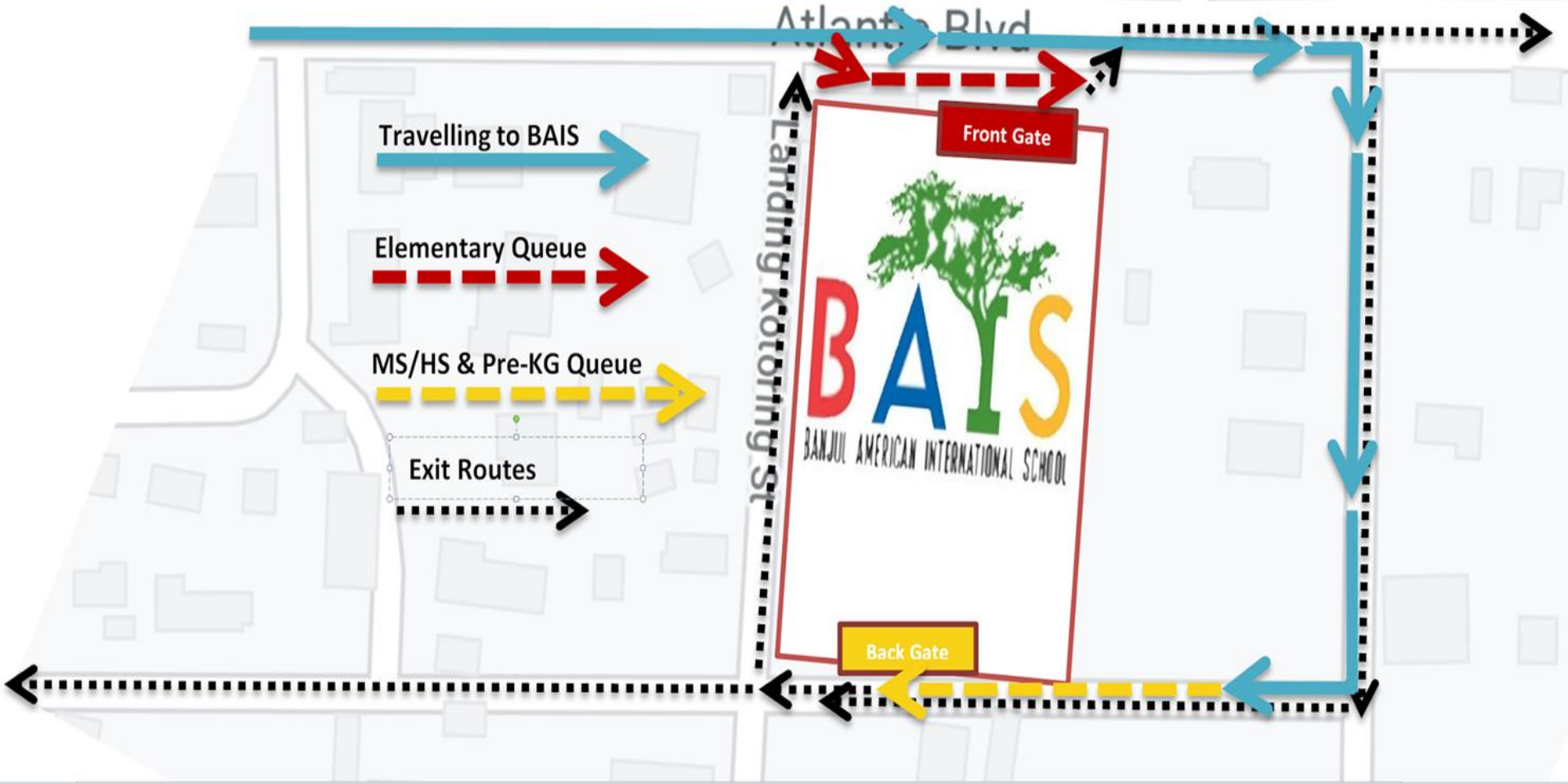
Daily Health Screening

- Parents submit the **daily health screening** to the teacher via WhatsApp prior to departing for school.
- Data is recorded by the Director.
- Link sent via WhatsApp
Daily: <https://forms.gle/Vw7pW14UzFWPouuZA>

TRAFFIC ROUTES

Use the opposite direction!

Traffic routes
REVERSED!



Arrival and Pick Up Traffic Map

Families / Drivers

Kindly stay in the
queue



ARRIVAL

ARRIVAL TIMES



Starting Next Monday

Elementary (K-G4)

7:45 and 8:00 a.m.

MS/HS (G5-8)

7:45 and 8:00 a.m.

Pre-Kindergarten & Seedlings

8:15 and 8:30 a.m.

ACCESS GATES

Elementary (K-G4)

Front gate on Atlantic Road

MS/HS (G5-8)

Back gate

Pre-Kindergarten & Seedlings

Back gate

TEMPERATURE CHECK

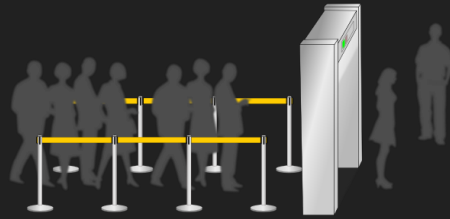
Students will have a **temperature check** by the homeroom teacher prior to entry.



Drivers will wait for the all clear signal.

In case of a temperature above 37.5

1. The student's vehicle will be directed to **park**;
2. Staff/student will have a **cool down period**;
3. Staff/student will be **re-screened** after cool down period;
4. If the temperature remains high after 2 cool down periods, the student/staff member will **return to their vehicle and go home**.



CAMPUS ACCESS

CAMPUS ACCESS

For the safety of our
community,
no parents/drivers
will exit the vehicle
or enter campus.

After screening at the gate,
students will enter,
observe physical distancing,
and move to a handwashing
station.

BEGINNING THE DAY

Students will enter the classroom when directed by their teachers, storing all personal items at desk.



DISMISSAL & PICK UP

This week - Wednesday, & Thursday MS/HS: Pick Up 2:30 p.m.

Next Week: Monday - Thursday

KG-HS: Pick Up 3:15 p.m.

Fridays

KG-HS: Pick Up at 12:30 p.m.

DISMISSAL & PICK UP

1. Students stand with siblings in waiting area maintaining appropriate distancing.
2. Cars will wait in queue.
3. Driver shows name placard to security who calls students.
4. Students will exit gate, enter car and depart.
5. One teacher will monitor inside and the other will monitor outside the gate.

PHYSICAL DISTANCING



Lines are painted or taped on walkways and in classrooms and bathrooms every 1.5 m as a visual reminder for appropriate distancing.

Teachers will teach and remind students of safe movement systems that support social distancing. A “keep to the right” system will be used in walkways.

PHYSICAL DISTANCING



When moving in and out of classrooms, teachers will direct students to **move one by one** to ensure social distancing.

Physical distancing will continue inside bathrooms/toilets.



MASKS

Masks should be worn
at all times while on campus.

Anyone who does not wear a mask
while on campus
will be reminded by school staff to do so.

Any student or adult
who refuses to wear a mask
will be asked to leave the campus.

2 MASKS 2 BAGS

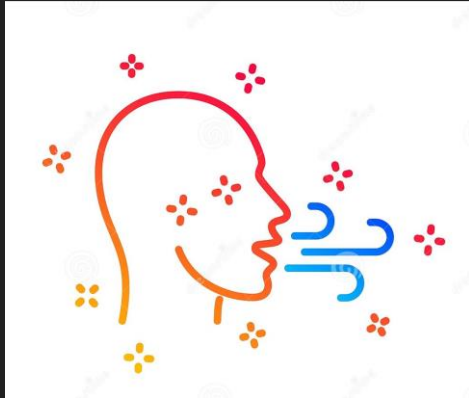


Each student will bring **2 masks** to school each day: **1 worn and 1 extra in a sealed plastic bag.**

Each student will bring an **extra sealable plastic bags** to store masks: 1 bag for the clean mask, and 1 empty bag to hold the mask being worn during lunch/snack.

Each classroom will have a supply of masks in the event that a student's mask is soiled or lost.

REDUCING RESPIRATORY RISKS



Desks are arranged to minimize viral droplet spread: 1.5 meters apart and facing the same direction.

Plexiglass dividers are installed on all student desks.

Windows and doors are kept open at all times with fans on.

Everyone should wear clothing suitable for the day's temperature.

Classes may be held outdoors in pod areas with appropriate distancing.

HAND HYGIENE



Everyone will wash their hands before moving to another section of the school.

Additional handwashing stations and automatic sanitizer dispensers are installed.

Everyone will wash hands / sanitize hands:

- Before and after recess;
- Before and after eating snack / lunch;
- When entering/exiting classrooms.

MATERIALS



VectorStock®

VectorStock.com/24723280

To reduce the possibility of infection, materials will not be shared.

No sharing of personal tools or equipment - pencils, pens, rulers, computers, electronic devices.

Individual materials will be provided for students.

FOOD & DRINK



The sharing of food and drink presents a high risk of infection.

- **No sharing** of food or drink is permitted, including birthday celebrations.
- Students will **bring their own** snacks, lunch, and drinks from home.
- Students will **bring their own water** bottle to school already filled. Refilling water bottles will be supervised in each classroom.
- Students should **bring their own** cutlery, plates or bowls from home.

FOOD & DRINK



The sharing of food and drink presents a high risk of infection.

- **Handwashing** will take place before any eating commences & masks will be folded carefully.
- Students will eat snack & lunch at desks in their classrooms or in designated outdoor areas for each pod.
- Physical distancing will be maintained.

RECESS PROCEDURES



Each pod will have its own recess times to use the large field and playground areas.

Everyone must maintain a 1.5 m distance and wear a mask during recess breaks.

Students will not share sports equipment; activities will be 'individual use only' for time being.

There will be cleaning and disinfecting of playground equipment before another pod has recess.

SPECIALIST CLASSES



Initially, specials classes will continue via Zoom to maintain the 'pod' security.

Lessons will be seen in the classroom via Zoom.

Some classes will require individual devices (e.g. Art) and some will use a whole class Zoom connection.

AFTER SCHOOL ACTIVITIES



ASAs will not be offered initially as we adjust to the new schedules and systems.

CLEANING & DISINFECTION



Soft furnishings are removed.

Rooms are deep cleaned daily and stocked with appropriate disinfecting materials.

Materials used by students will be returned to the pod sanitizing bin before shared with other students.

CLEANING & DISINFECTION



Daily cleaning and disinfection of classrooms and offices will take place after school, with particular attention given to higher risk areas such as door handles, desk surfaces, and other “touchpoints.”

Playground equipment will be disinfected between groups.

Shared equipment such as photocopiers & tech equipment will be disinfected accordingly.

QUARANTINE on RETURN



Staff and students returning to The Gambia will be asked to quarantine for 14 days prior to attending classes on campus.

Online lessons and support of learning will continue.

CONFIRMED CASES

**Exposed will follow the definition in use by CDC/WHO/MOH
-- e.g. *within 1 meter for at least 10 minutes.*

DAY ONE

Close affected cohort classrooms.

Notify local health officials.

Inform the BAIS Community. (Confidentiality of the patient will be maintained - i.e. name/grade/role of the person will not be shared.)

Begin contact tracing. Students and staff who may have been exposed** to the virus will be contacted and asked to observe self-quarantine.

DAY TWO

Move the affected cohort to online learning.

Educate families, students and staff about the symptoms, procedures and the need to avoid stigma.

Board will approve the cohort's return to face-to-face classes;
Director will inform the community.

Two deep cleanings will be completed the day prior to the cohort resuming lessons in person.

CONFIRMED CASES

DAY THREE

After 36 hours, open the affected cohort classroom/office to allow ventilation prior to disinfection.

After 48 hours, the entire school will be deep cleaned and disinfected as per CDC/WHO protocol.

DAY FOUR OR BEYOND

Monitor community spread and symptoms, if any.

Emergency Team will meet to review the situation and guidance, if any, from MOH.

Recommendation will be made to the Board for when to resume in person lessons for the affected cohort.

Board will approve the cohort's return to face-to-face classes; Director will inform the community.

A second deep cleaning will be completed the day prior to the cohort resuming lessons in person.

EXPOSURE TO CASES OUTSIDE BAIS

Remove from in-person lessons for quarantine.

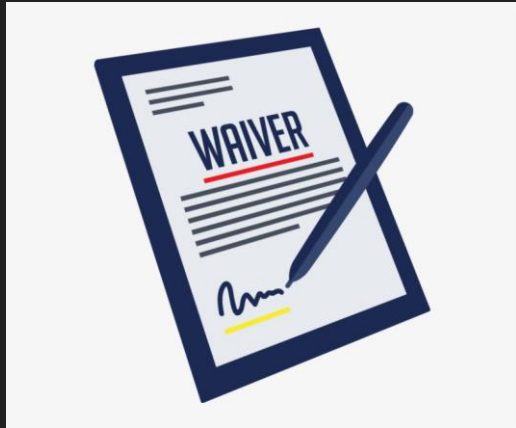
If person exposed develops COVID19 symptoms, contact trace within 'pod' as necessary.

HOME-SCHOOL PARTNERSHIP for COMMUNITY HEALTH



*The health of the whole
community depends on
each & every one of us.*

WAIVER FORM



Due to movement within the community, it is not possible to guarantee a COVID-free school.

A signed form is required prior to student/staff attendance in face-to-face lessons.